

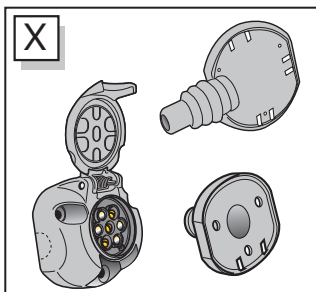
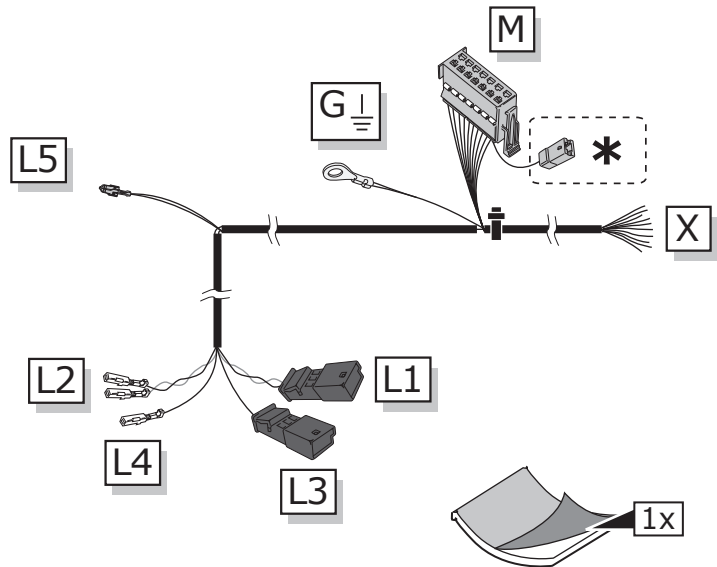
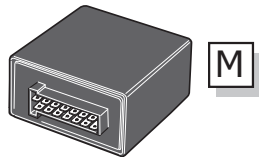
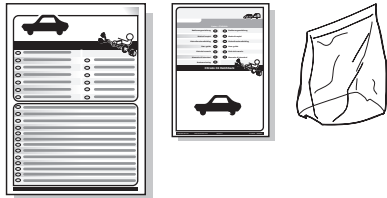
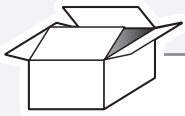
## Skoda Rapid 06/2015-

Partnr.: SK-025-B1U

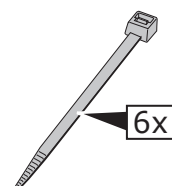
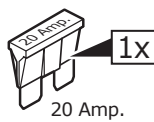
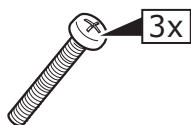
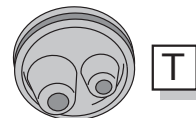
- Fitting instructions electric wiring kit tow bar with 12-N socket up to DIN/ISO Norm 1724.
- We would expressly point out that assembly not carried out properly by a competent installer will result in cancellation of any right to damage compensation, in particular those arising by virtue of the product liability act.
- Contents of these kits and their fitting manuals are subject to alteration without notice, please ensure that these instructions are read and fully understood before commencing installation.
- Do not overload circuits; the maximum loads per connection are detailed in this manual.
- Attention! Before Installation, please read this manual carefully and inform your customer to consult the vehicle owners manual to check for any vehicle modifications required before towing.
- In the event of functional problems, troubleshooting must be limited to about 0.5 hours, contact the technical support:  
[t.skinner@ecs-electronics.com](mailto:t.skinner@ecs-electronics.com) / 07440 202 052.



# Part list

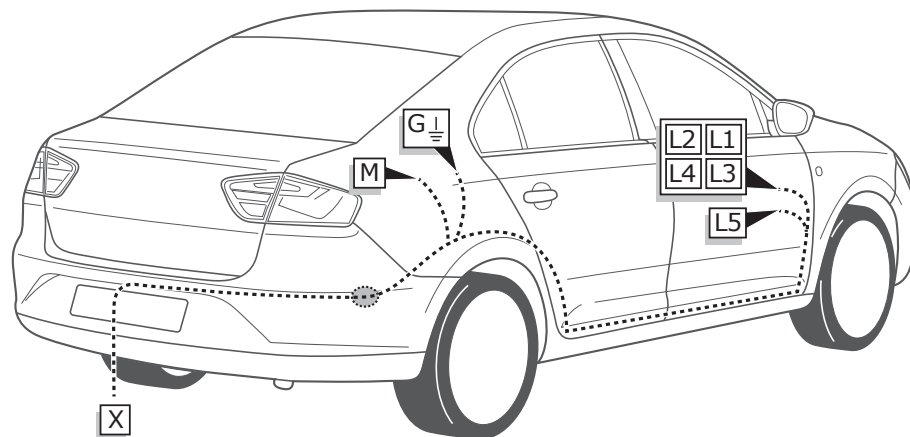


\* Reverse signal preparation

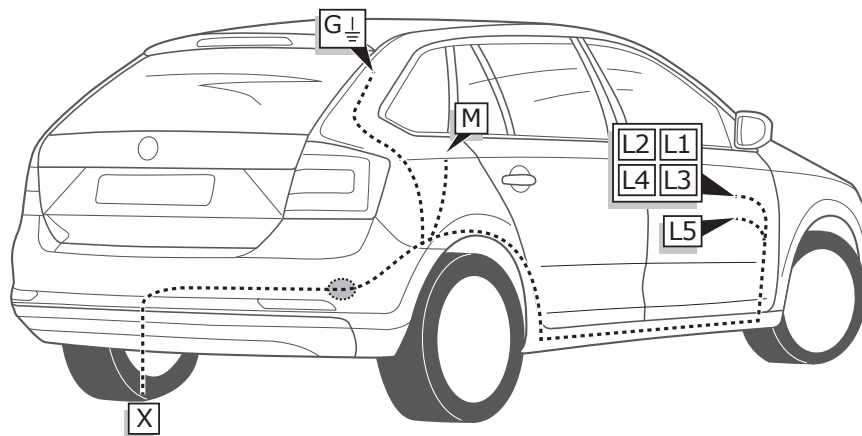


# ROUTING

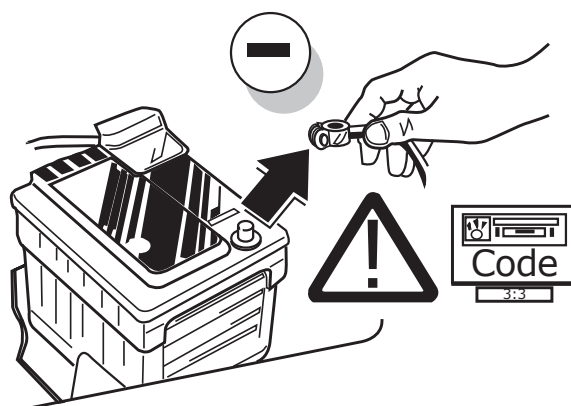
Skoda Rapid HB



Skoda Rapid Spaceback

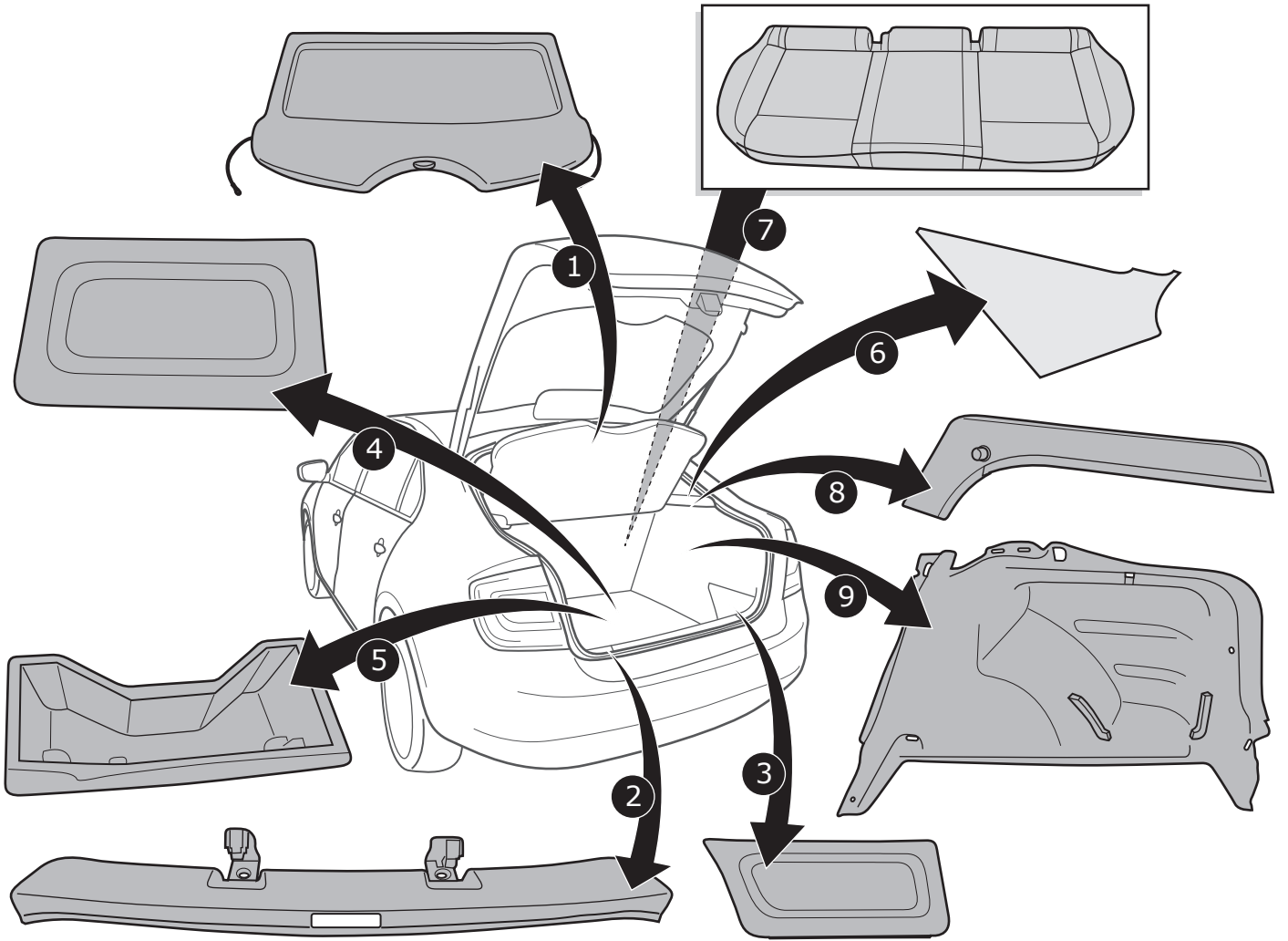


1



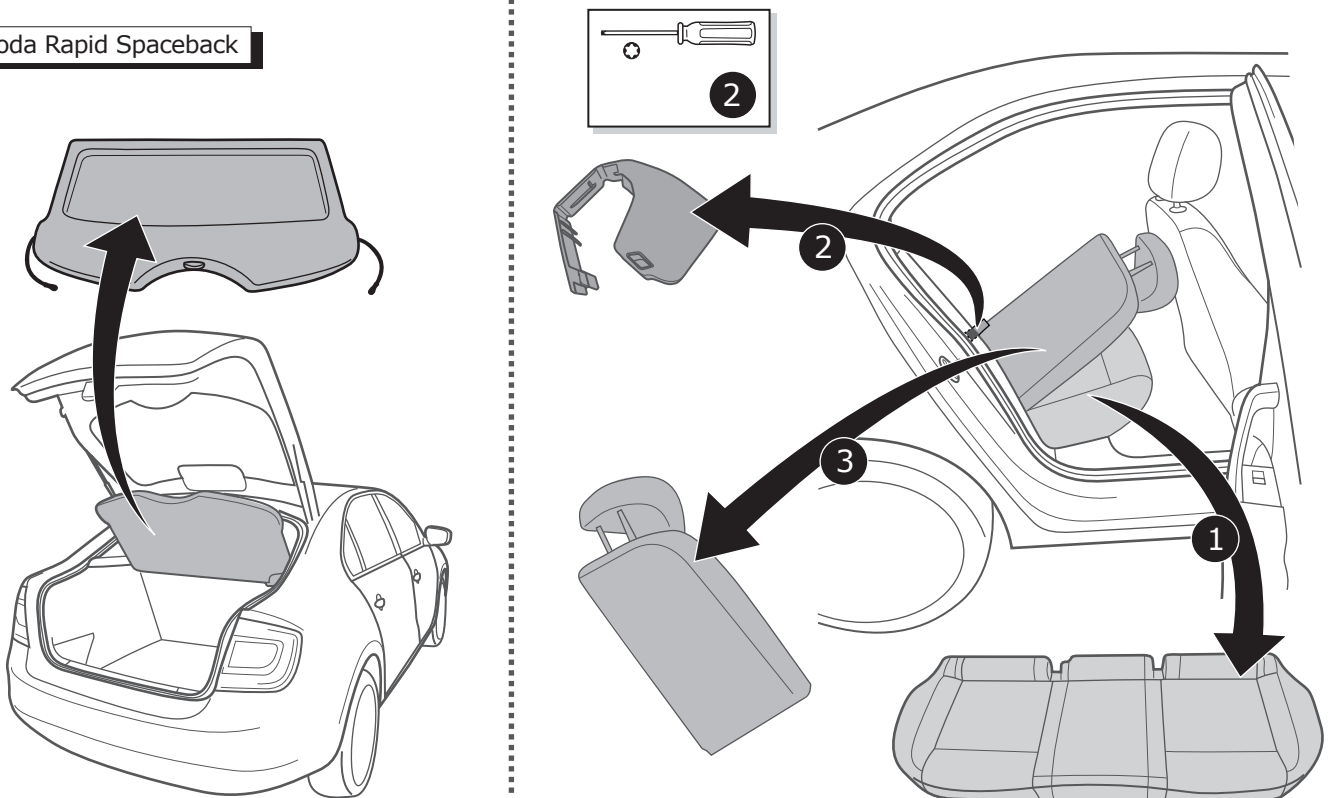
2

Skoda Rapid HB



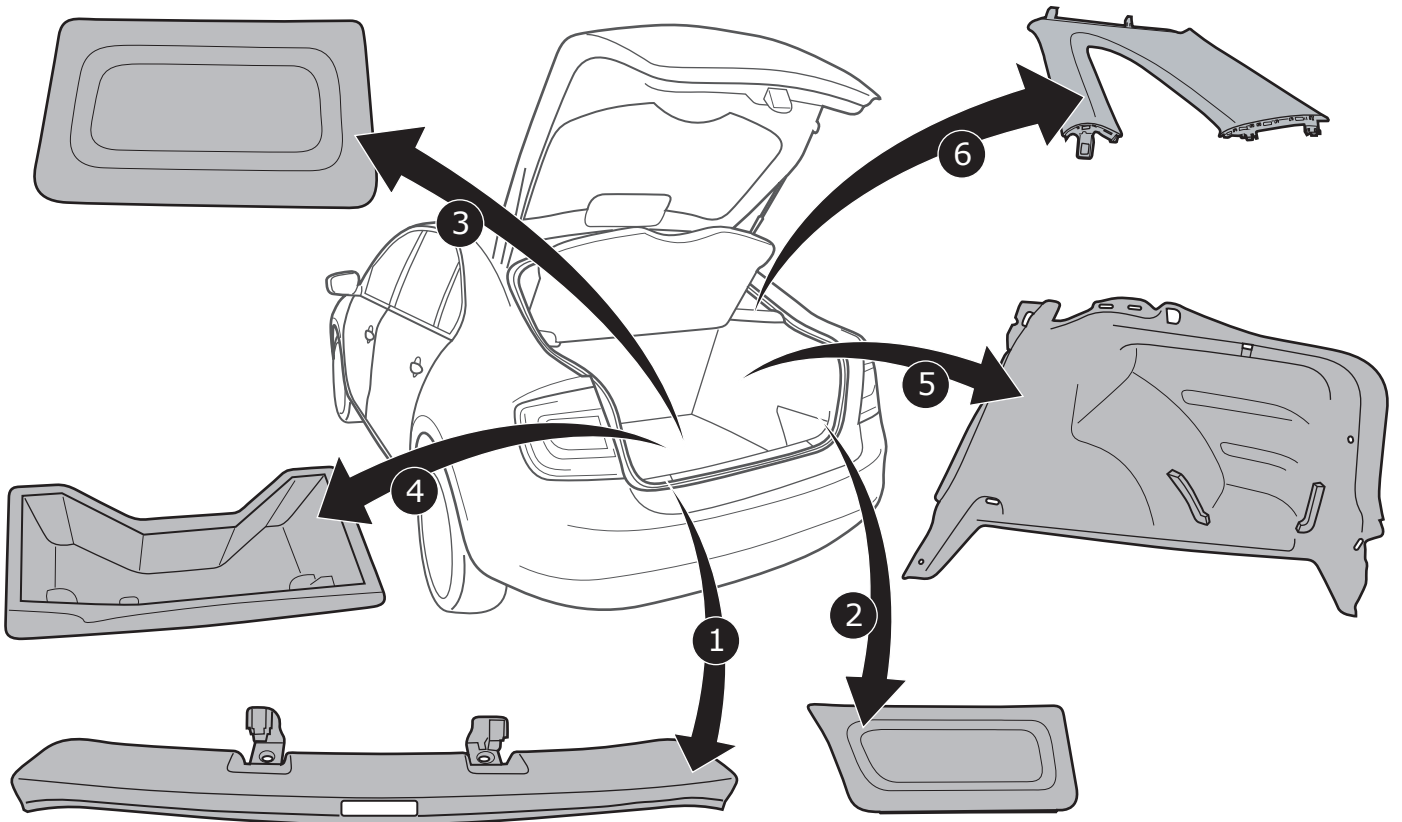
3

Skoda Rapid Spaceback



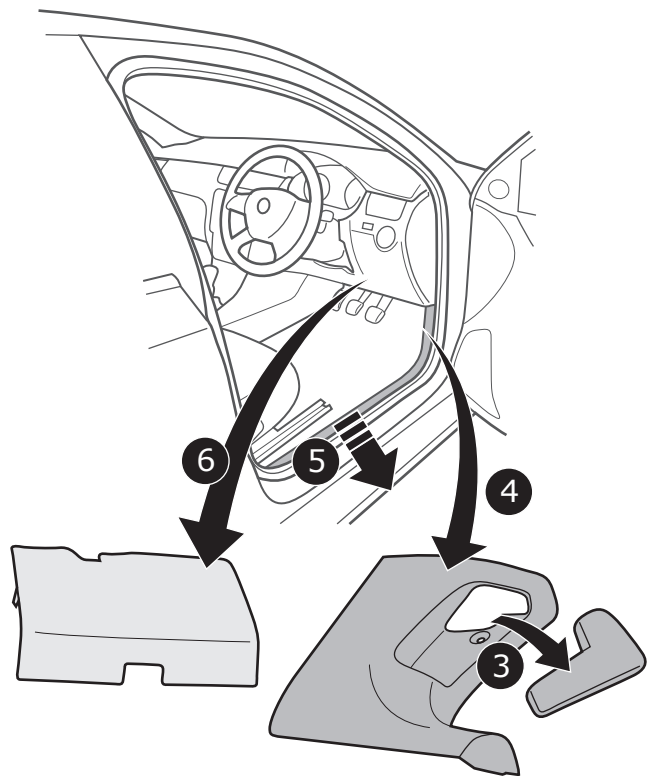
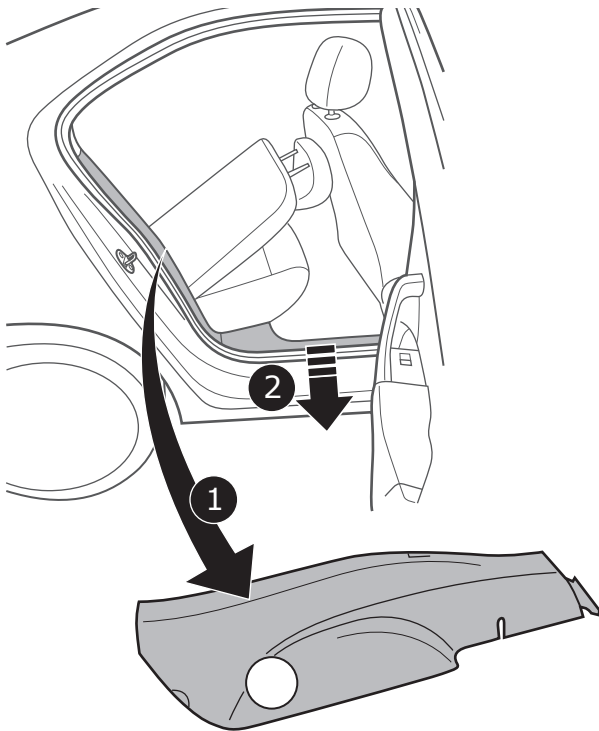
4

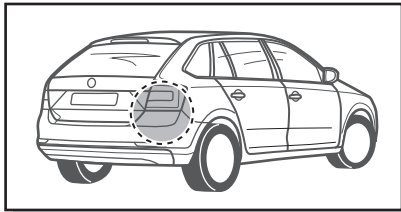
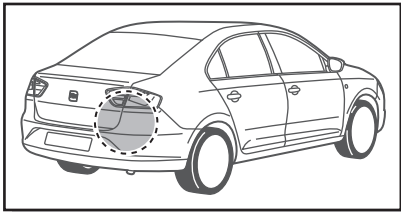
Skoda Rapid Spaceback



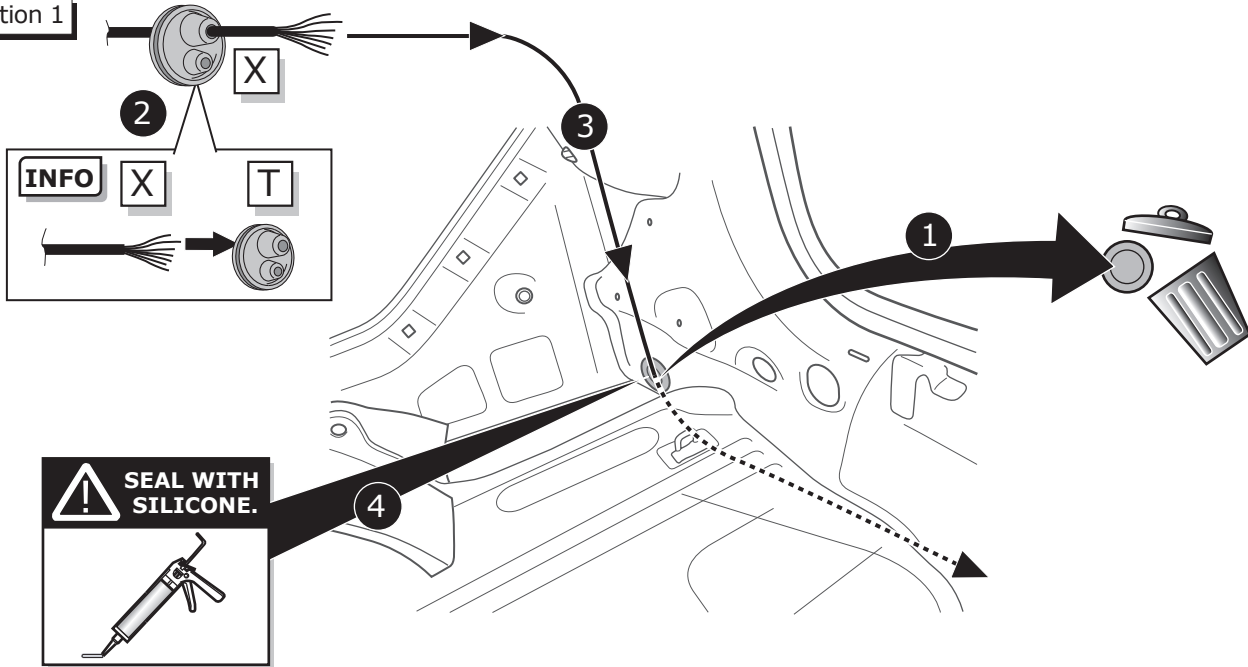
5

All models

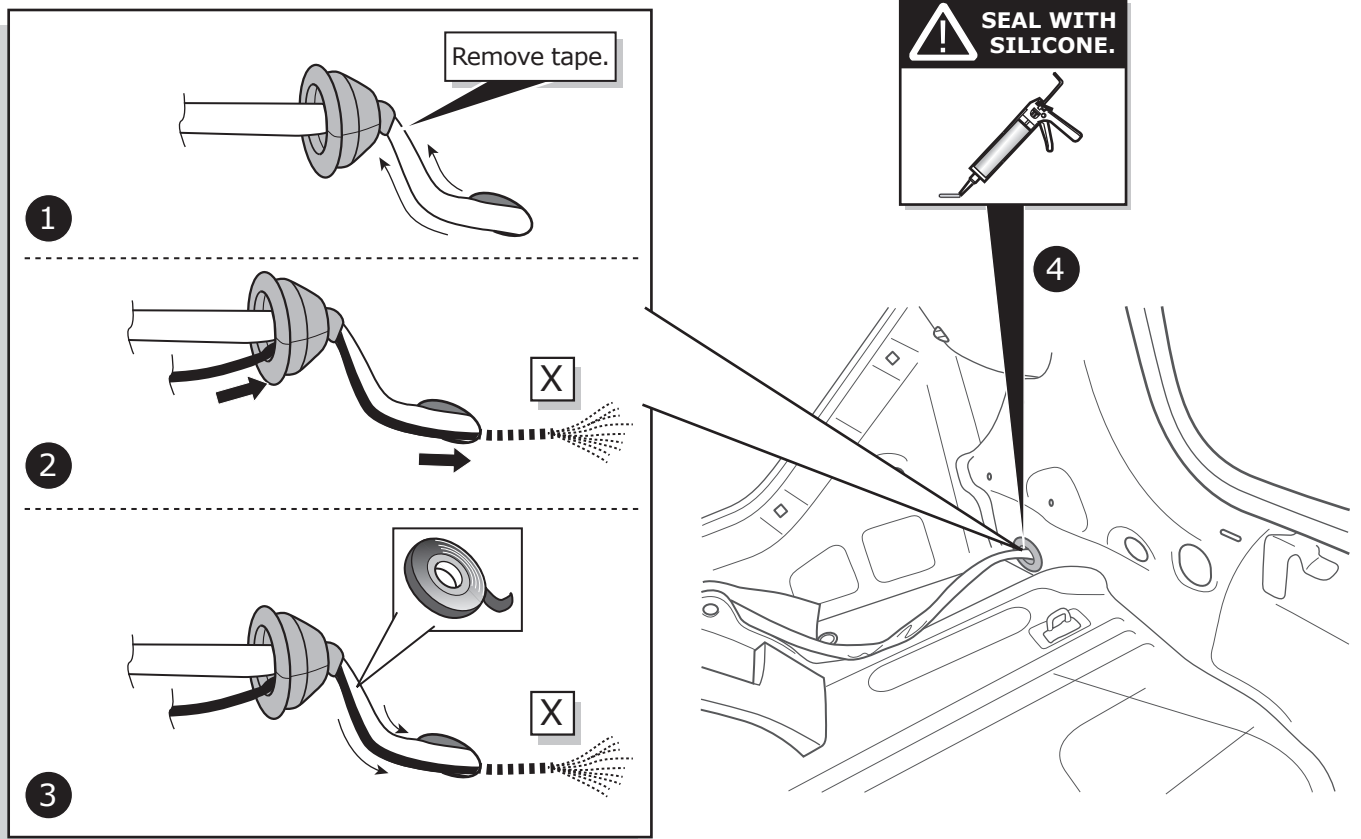




Option 1

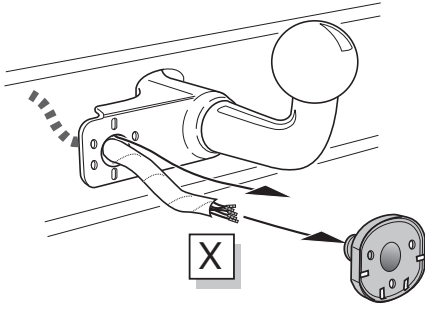


Option 2

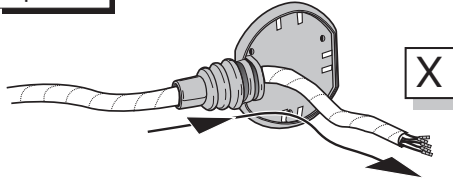


**A**

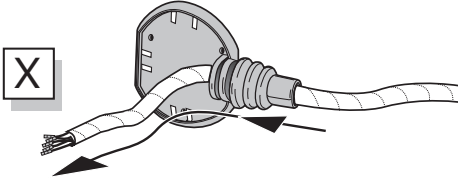
Option 1



Option 2



Option 3

**INFO**

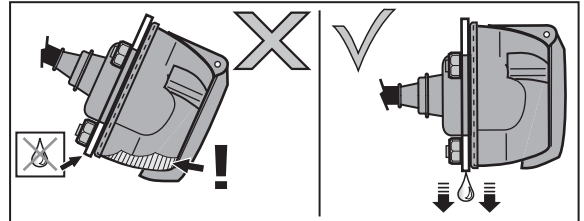
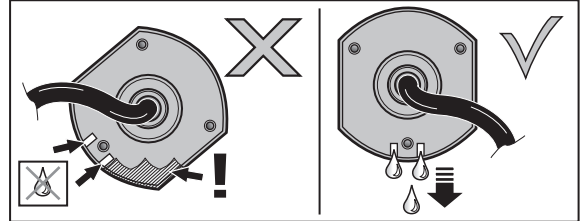
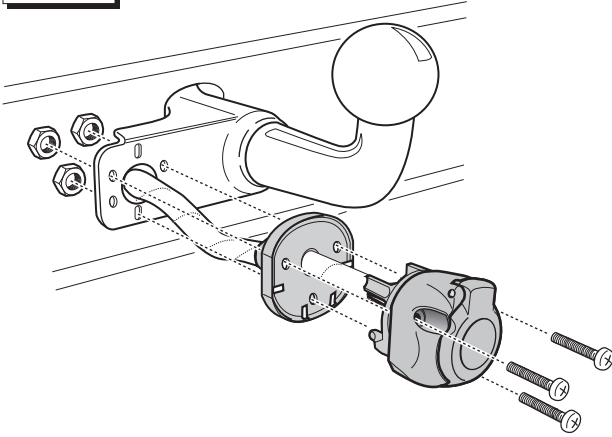
## SOCKET CONNECTION



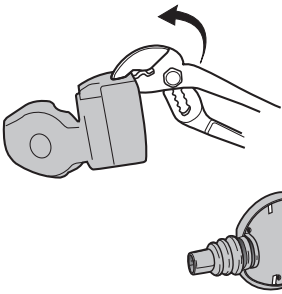
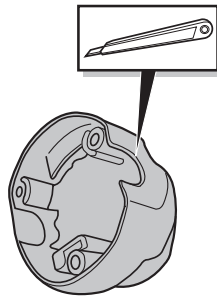
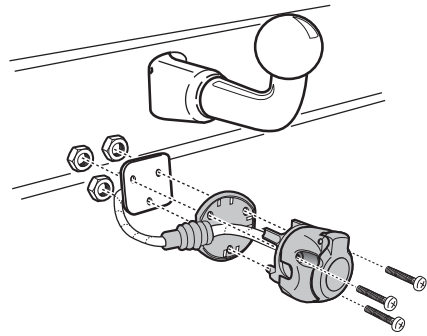
Pag. 15

**B**

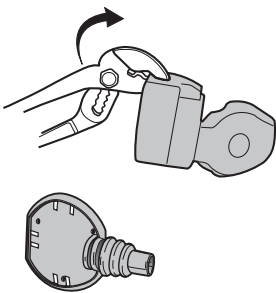
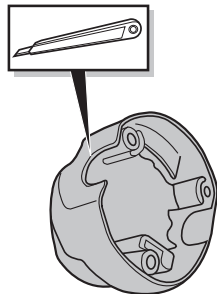
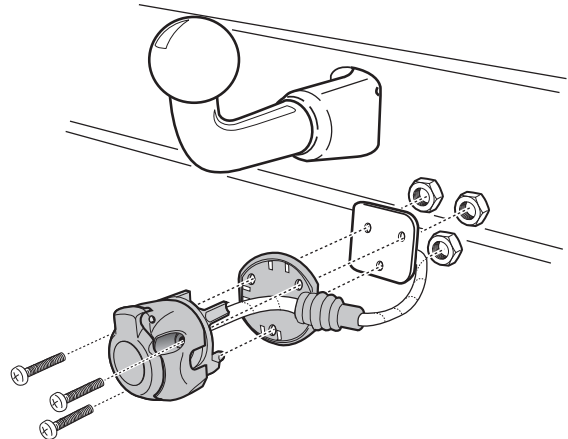
Option 1

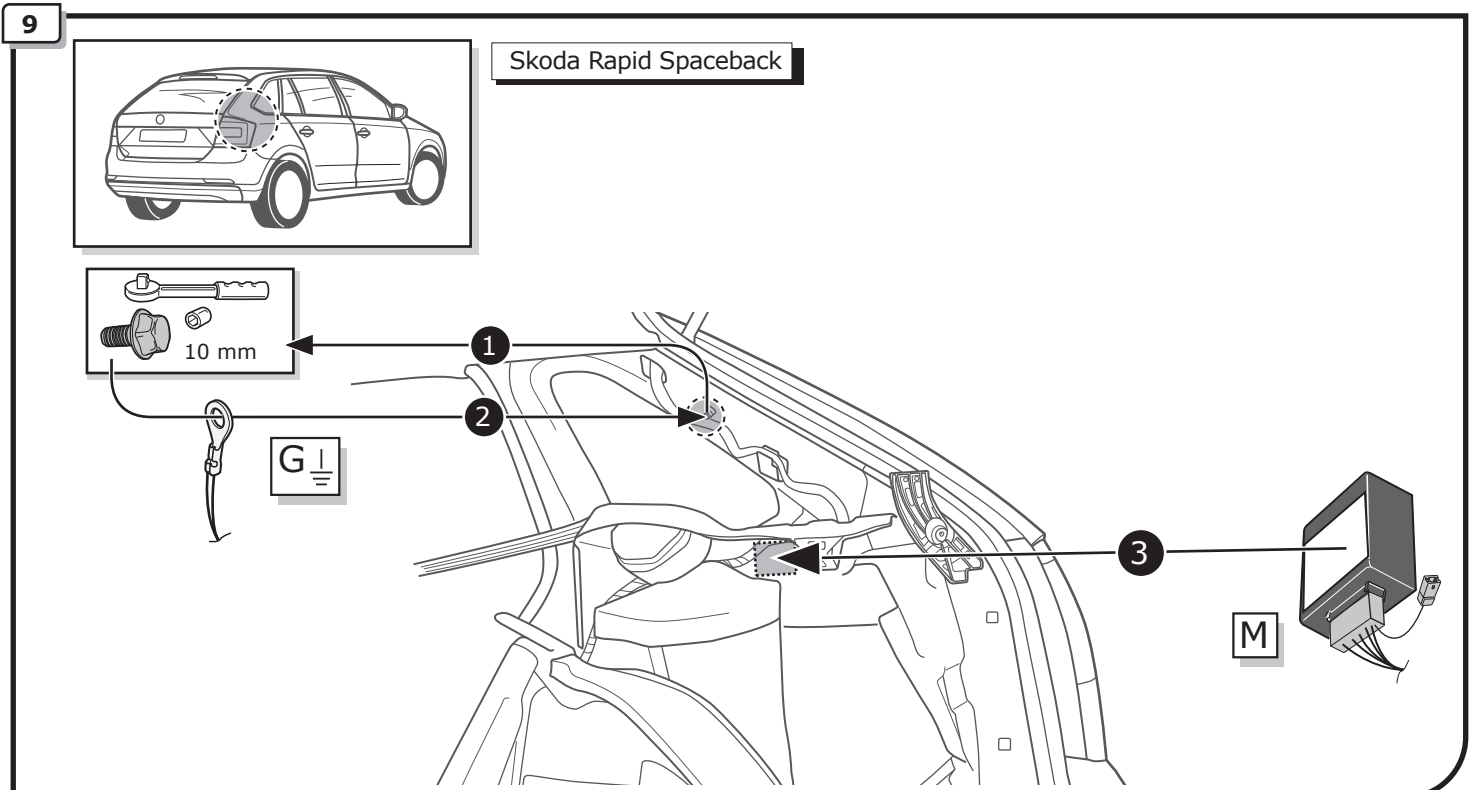
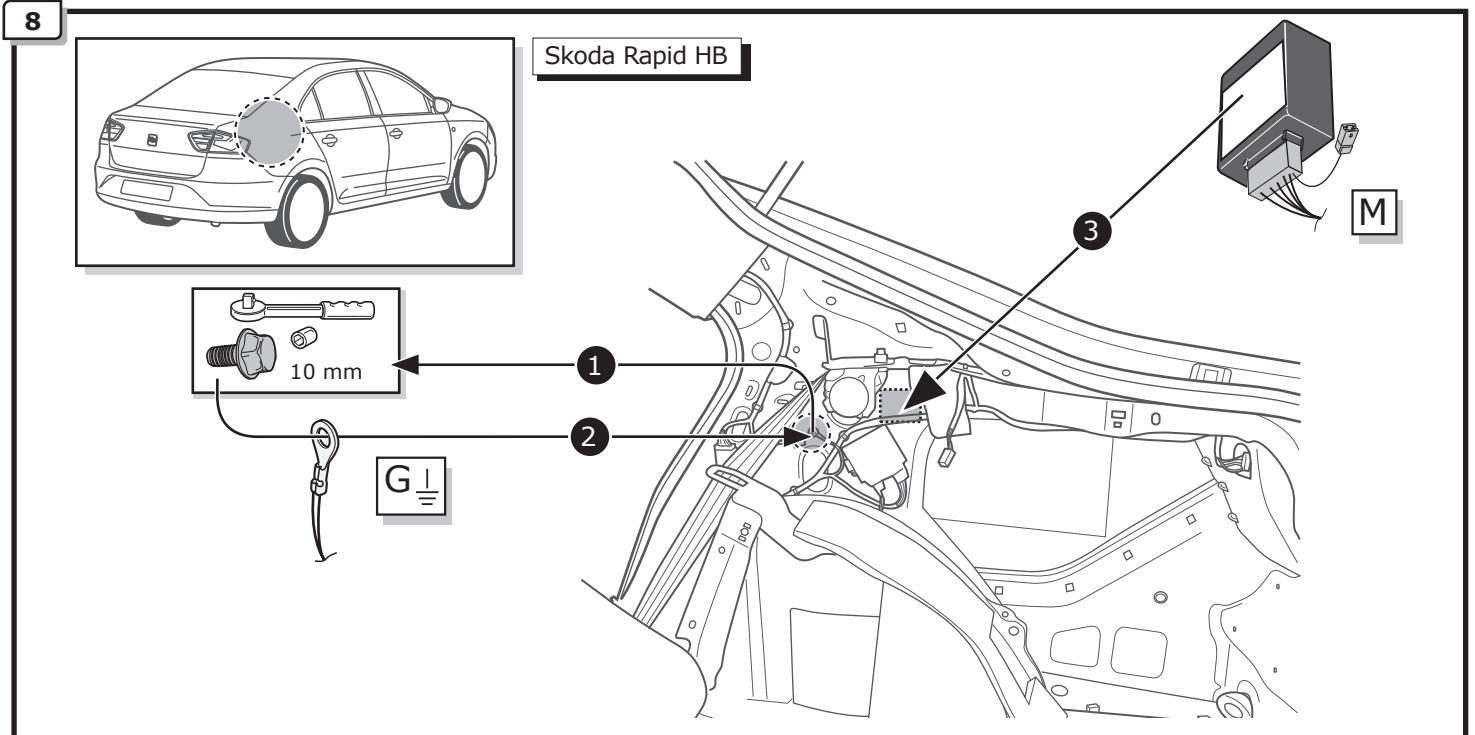
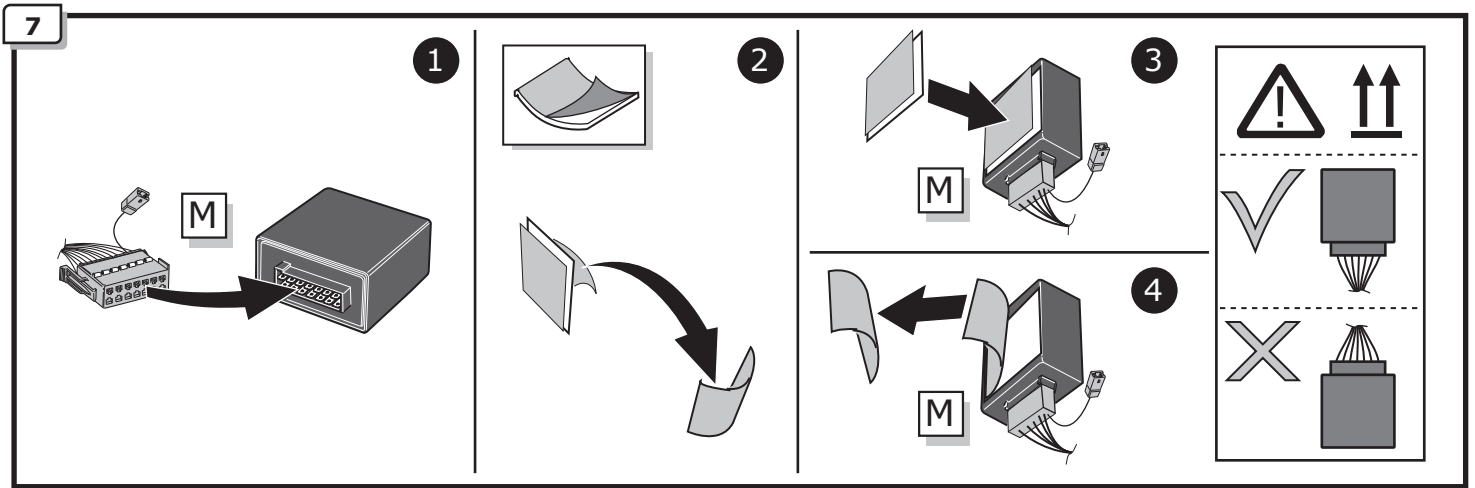
**C**

Option 2

**1****2****3****D**

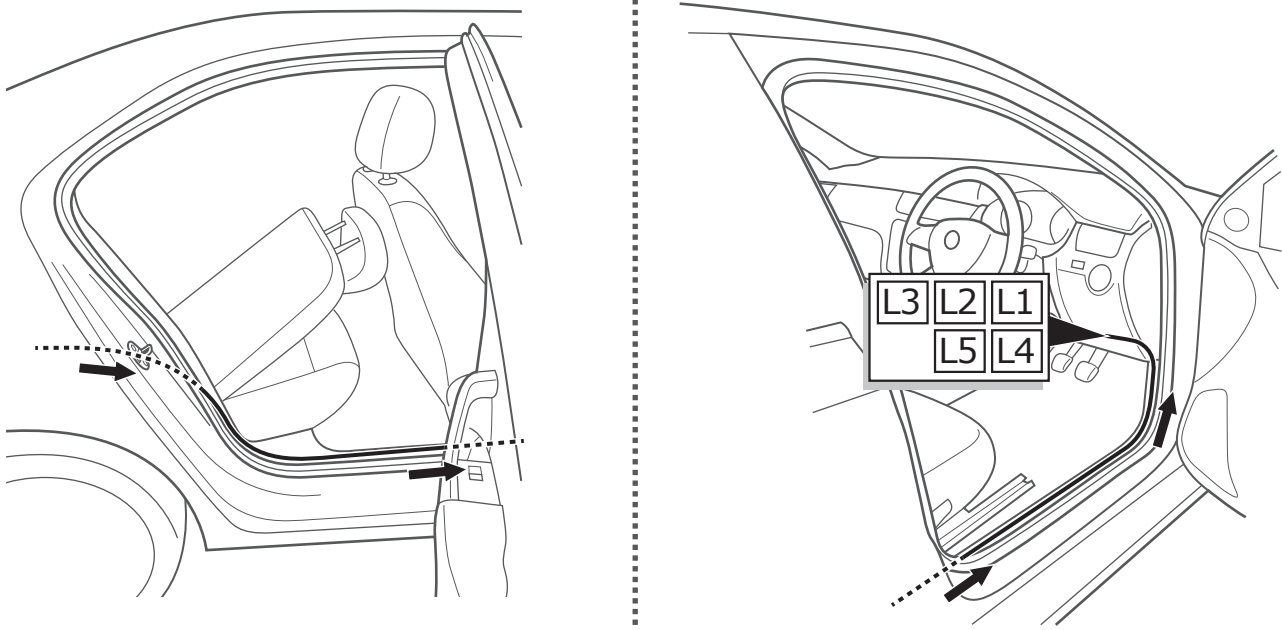
Option 3

**1****2****3**

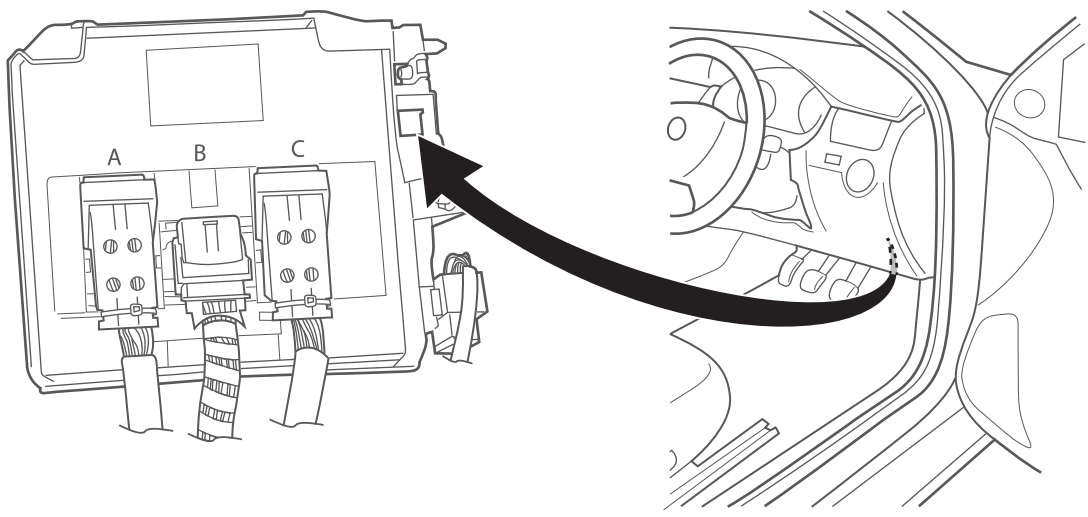




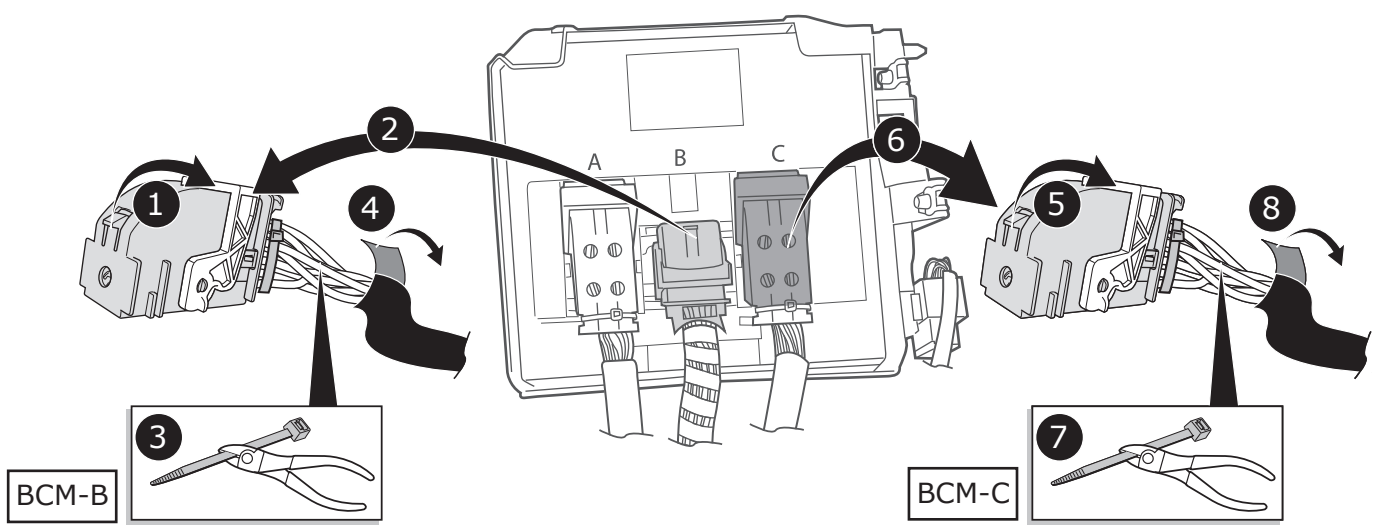
10



11

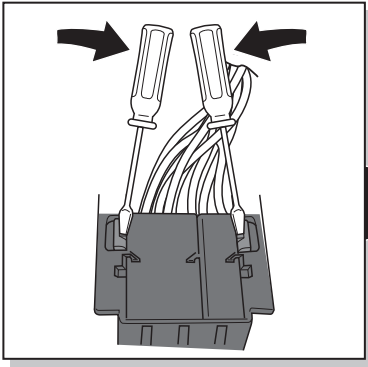


12



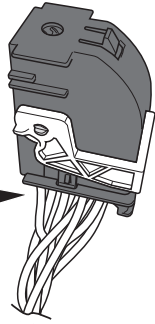
13

1

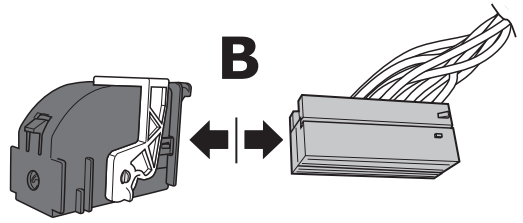


BCM-B

B

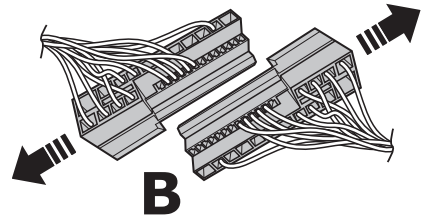


2



B

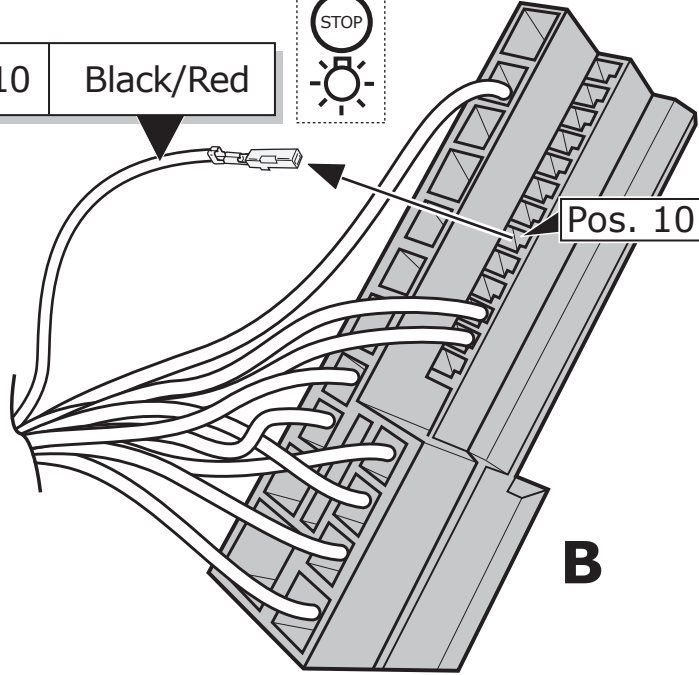
3



B

14

Pos. 10 Black/Red



Pos. 10

B

15

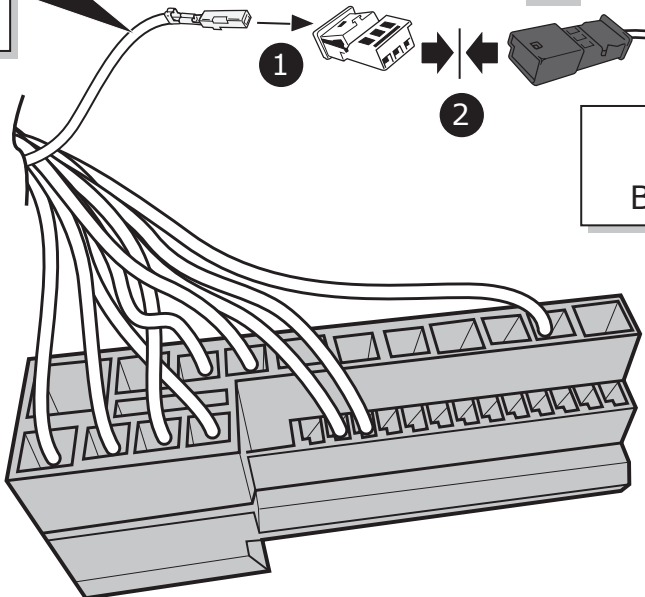
Pos. 3 Black/Red

L3

1

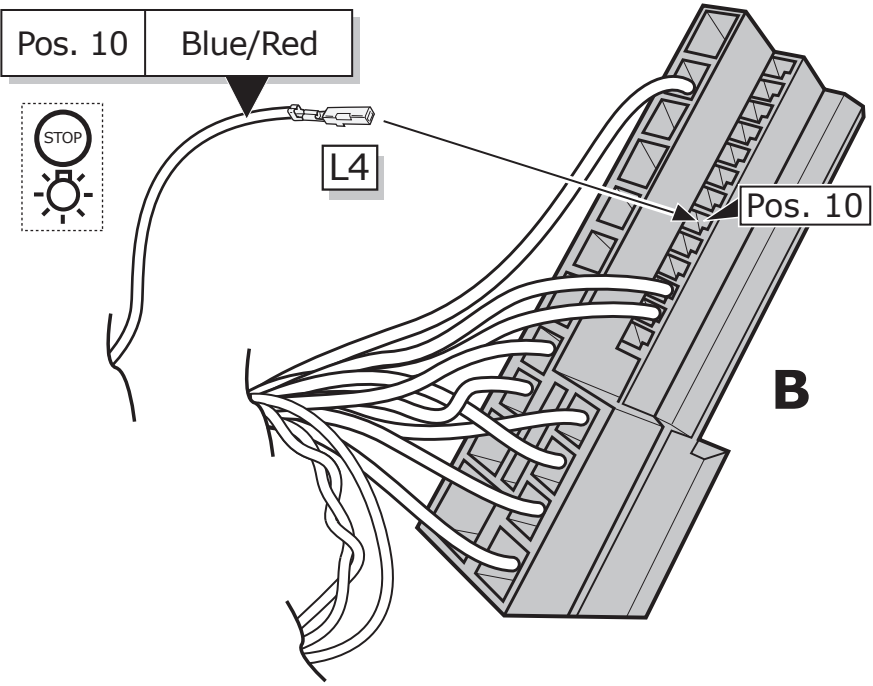
2

Pos. 3 Blue/Red



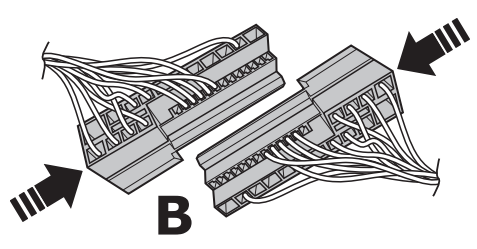
B

16

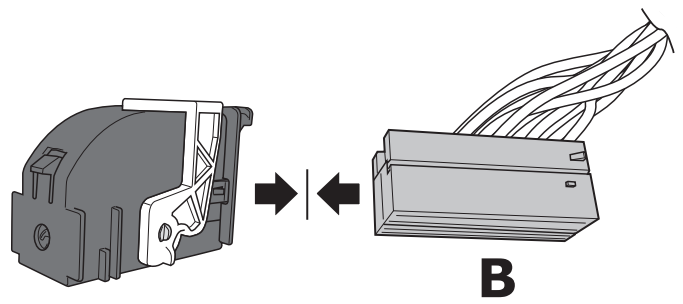


17

1

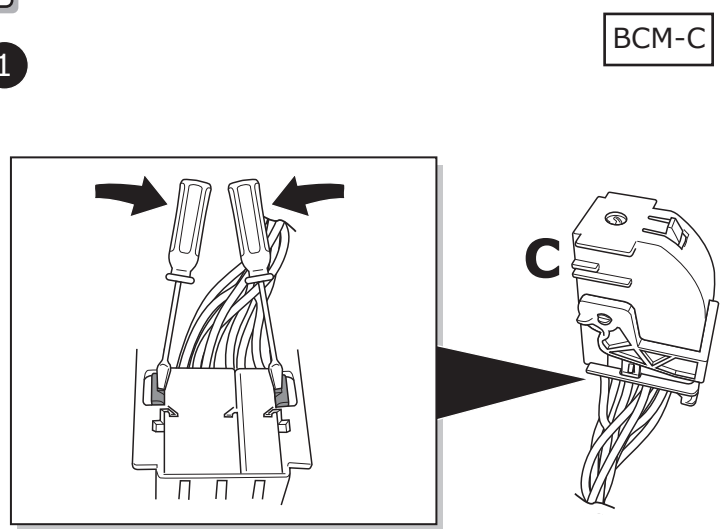


2

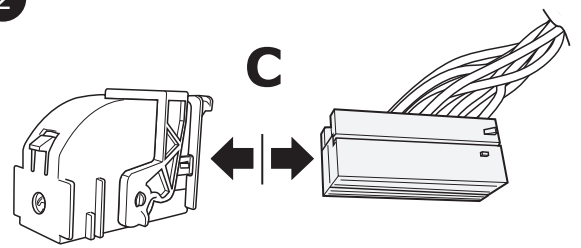


18

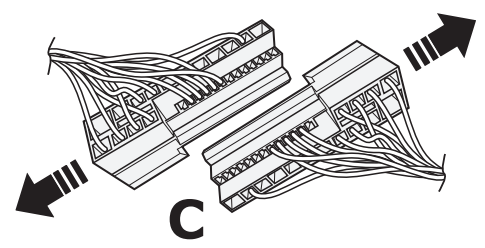
1



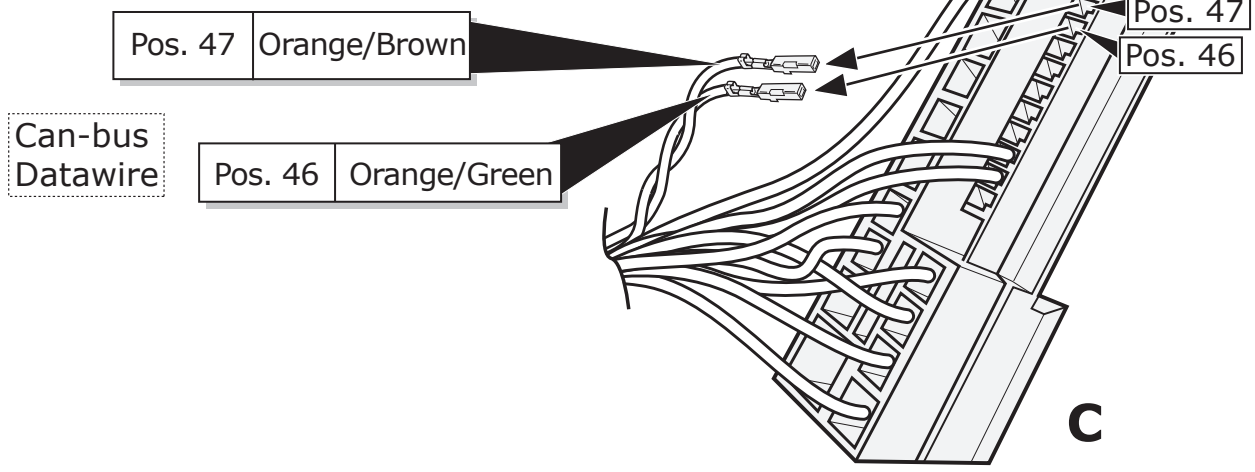
2



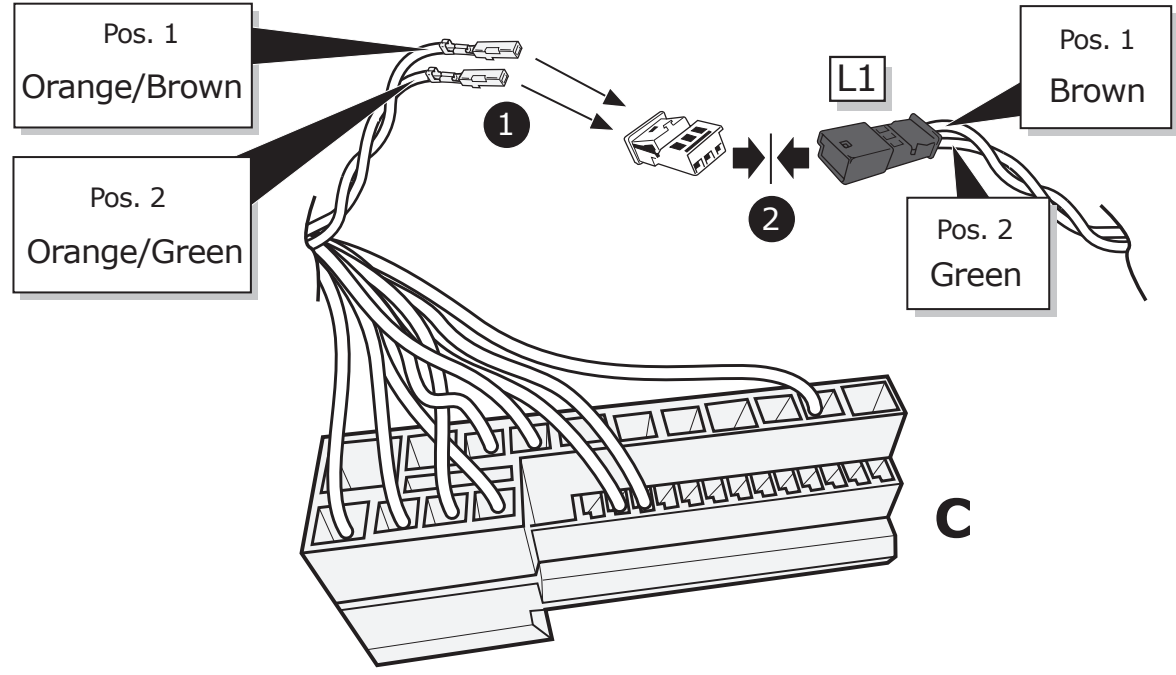
3



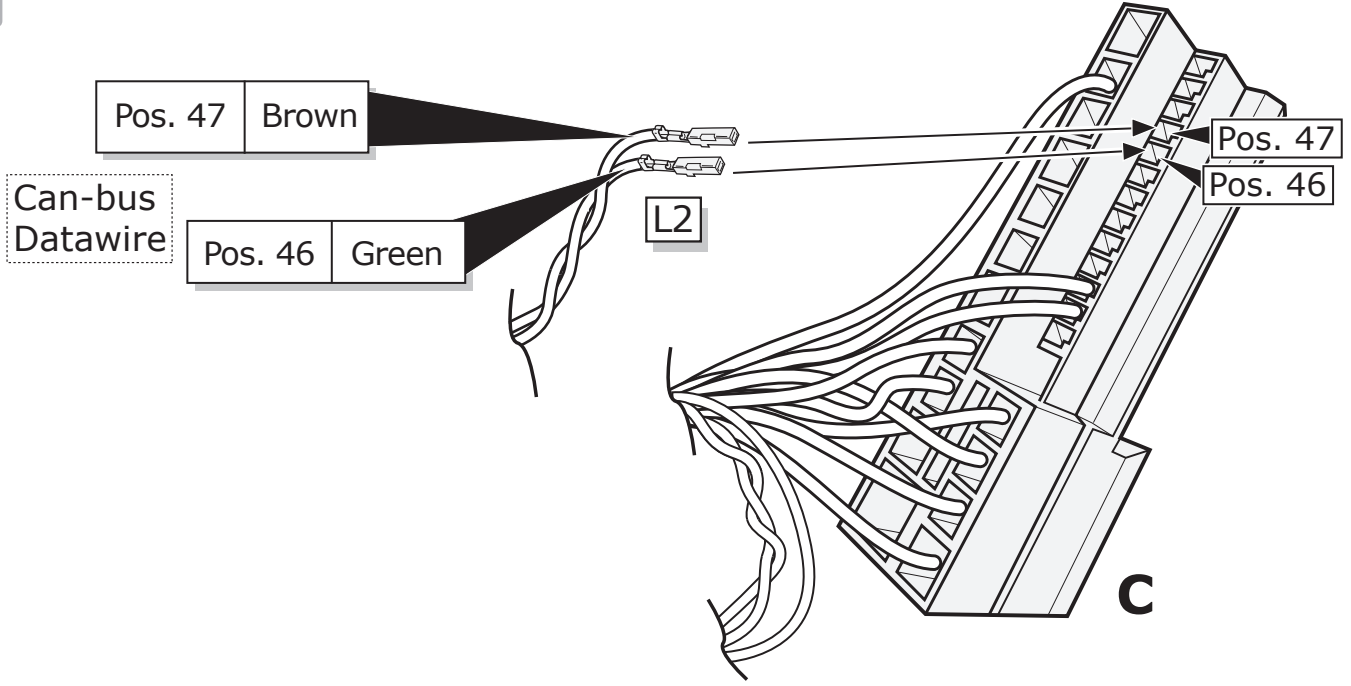
19



20

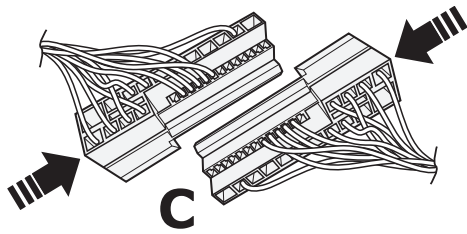


21

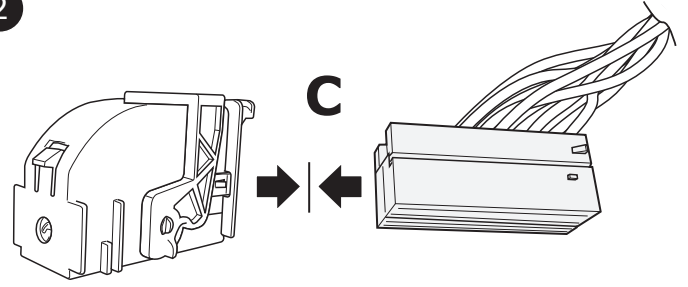


22

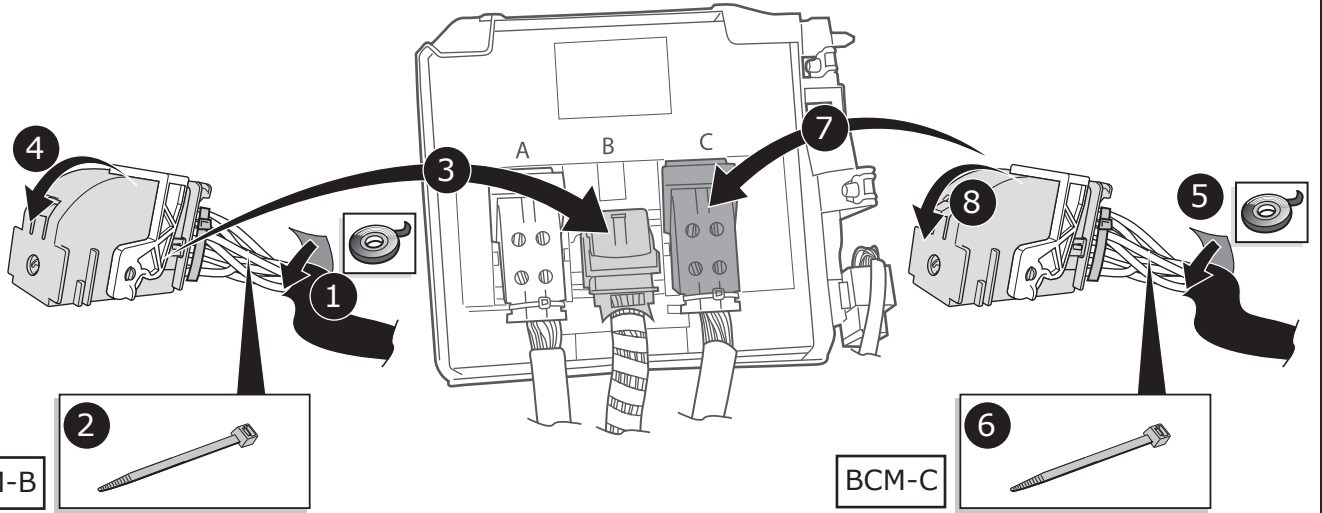
1



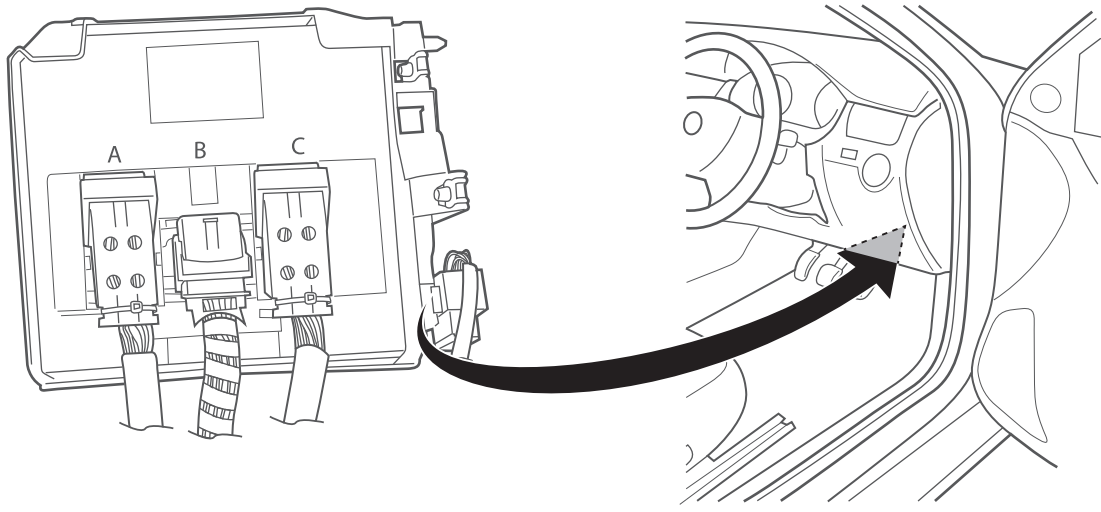
2



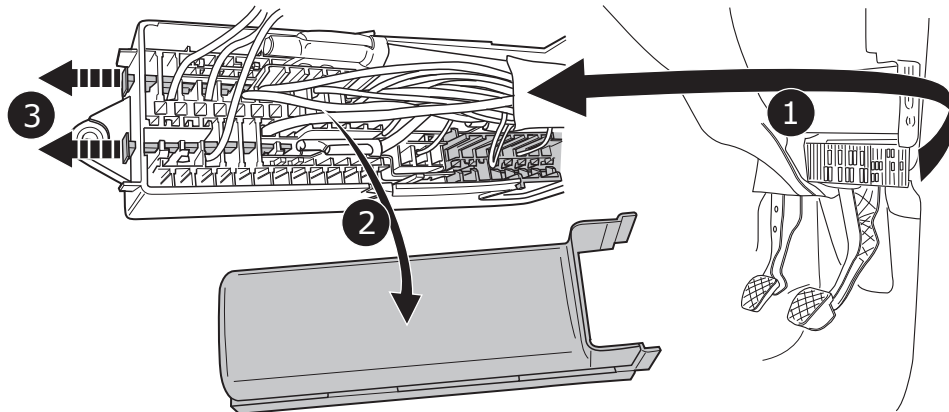
23



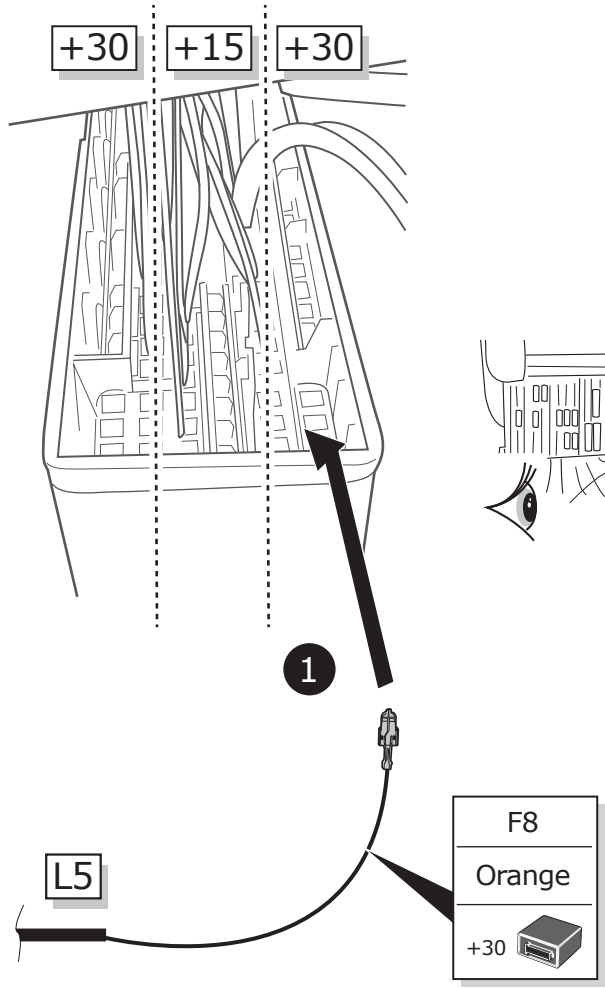
24



25



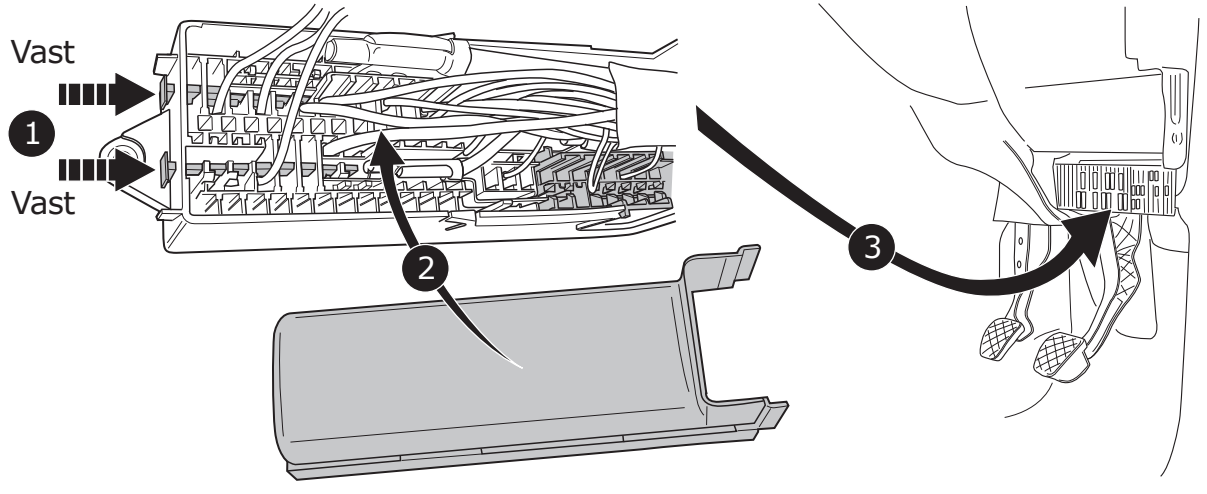
26



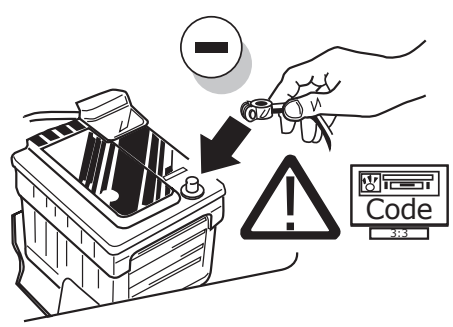
2

3

27



28



29

**Online Coding procedure ONLY FOR V.A.G ODIS Tester**

**After installing the wiring kit please check the light functions of the Trailer/ Bike Carrier/ Caravan. They Will work without coding.**

**Please use SVM code: 325AA**

**Follow the ODIS coding instructions and close configuration.**

30

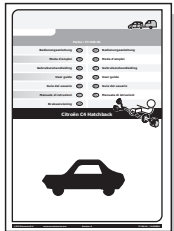
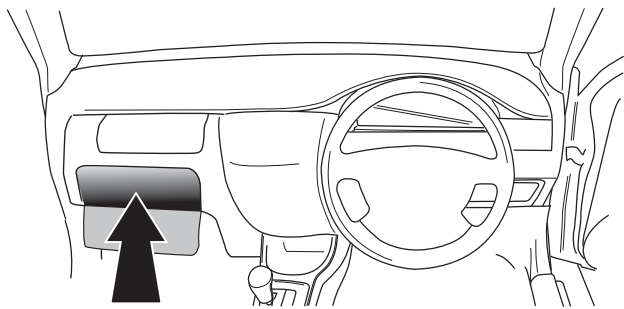


TEST ALL THE CIRCUITS WITH A TEST DEVICE WITH THE CORRECT POWER LOAD FOR EACH FUNCTION. A TEST DEVICE WITH LED'S CANNOT BE USED FOR THIS PURPOSE.

INFO

REINSTALL TRIM.

31



**User guide**



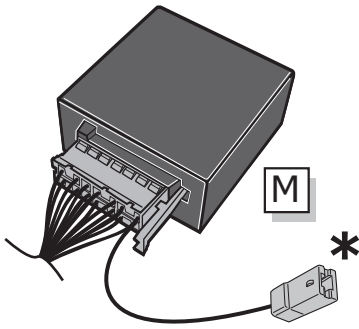
INFO

SOCKET CONNECTION

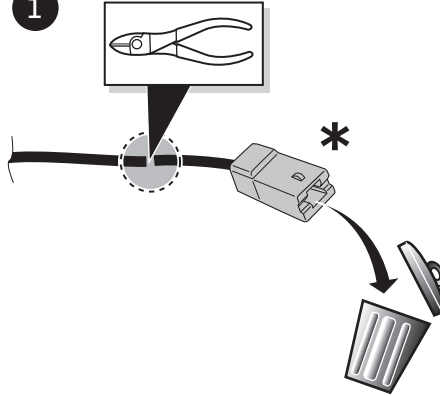
| DIN/ISO 1724 |              |      |       |              |           |            |             |
|--------------|--------------|------|-------|--------------|-----------|------------|-------------|
|              | 1/L          | 2    | 3/31  | 4/R          | 5/58-R    | 6/54       | 7/58-L      |
| Pmax         | 21W          | 21W  |       | 21W          | 42W       | 3x21W      | 42W         |
| Colour       | Black/ White | Blue | Brown | Black/ Green | Grey/ Red | Black/ Red | Grey/ Black |

# Reverse signal preparation

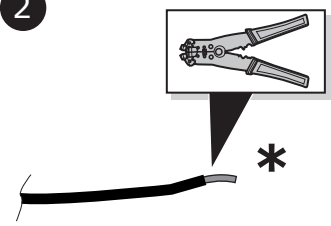
A



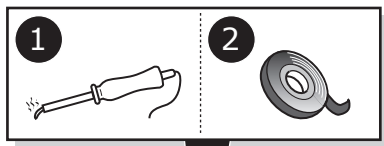
1



2



B



⚠ MAX = 21W

